

Historical Walking Tour of Newport, Vt.

Use this map to take a perfect stroll through history along our Waterfront and Main Street. All the information markers are in English and French. This project was a collaboration of the Memphremagog Historical Society, researched by Barbara Malloy and Bea Nelson, and the State of Vermont. Start anywhere and enjoy the sights.

Downtown Locations

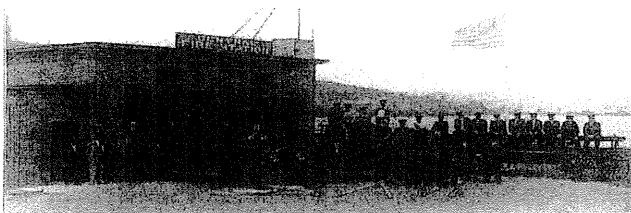
- A) Gateway Center
- B) Harbor Master's Office
- C) Pomerleau Park
- D) Chamber of Commerce Tourist Ctr.
- E) Emory A Hebard Office Building & Memphremagog Historical Soc Museum
- F) Public Service Park & Overlook
- G) Goodrich Memorial Library
- H) Newport City Hall & Police Station
- I) Old Fire Station Overlook

Markers

- 1) Lake Memphremagog's Early Inhabitants
- 2) 19th Century Newport
- 3) Tour Boats on the Lake
- 4) The Arrival of the Railroad
- 5) Newport's Hotels and Tourism
- 6) The Lane Opera House
- 7) Hebard Building Site History
- 8) Newport's Splendid Years
- 9) Early 20th Century Newport
- 10) Newport's Fire Fighters



Crossroad in History



M Brochure printed by the City of Newport, VT M

Memphremagog Historical Society
200 Main Street
Newport, Vermont 05855

City of Newport

The City of Newport, Vermont, is located at the southern end of Lake Memphremagog. The lake got its name from “Mamlabegwok”, the Western Abenaki word meaning “at the big lake water”. It is a 33 mile-long lake that flows north into the Magog River at Magog, Quebec, which then joins the St. Francis River at Sherbrooke, Quebec, and ultimately empties into the St. Lawrence River. More than 2/3 of the lake is in Canada. Four of the twenty islands are completely in the USA. The largest, Province Island, sits on the 45th parallel and has the International Border running across the southern tip.

This area was first mapped or sketched by General John Stark who passed through here as an Indian prisoner in 1752. He returned with Major Rogers’ Rangers after their successful expedition against the Indians of St. Francis in 1758. Tradition says that part of the expedition returned down the lakeshore to the southern end, then traveled the Clyde River to the Connecticut River.

The first settlement called Duncansboro was established in 1793, and according to the 1800 census there were fifty residents in eleven families. In 1816 the township annexed small parts of two adjoining towns and changed the name to Newport.

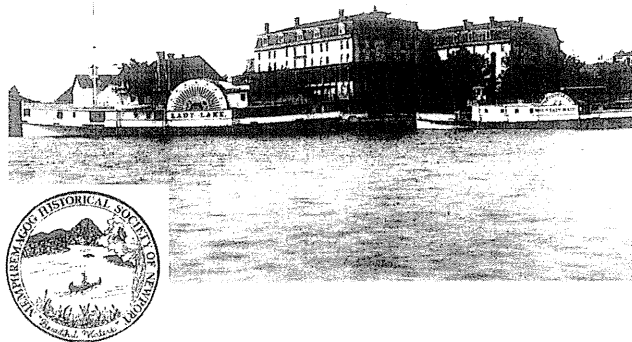
On March 5, 1918, the villages of Newport and West Derby were united by charter to form the City of Newport. A likeness of the famous paddlewheel steamer, The Lady of the Lake, was incorporated into the seal of the City.

The Lady of the Lake

This famous steamer was one of a number of excursion boats that toured the lake during the last half of the 1800’s. She made her first trip down the lake in 1867, with Captain George Washington Fogg at the helm.

The steamer was docked at Steamboat Wharf near the Memphremagog Hotel and the Newport Railroad Station in Railroad Square. Carrying as many as five hundred passengers, it would make two trips a day to Magog at the Canadian end of the lake. There were moonlight excursions too, where “passengers tripped the light fantastic on its spacious decks”. Imagine being on the first passenger train entering town in 1863 over a one track trestle and rounding the bend in front of this huge 400 room hotel and impressive dock.

The interest in lake tours waned with the introduction of the automobile, and on October 20, 1917, the Lady of the Lake was towed from the wharf. She lives on in the City Seal and in signs and flags around the city. During your stroll on the Walking Tour, relax on one of the strategically located benches and enjoy the beautiful ever-changing view of the lake and mountains.



The Memphremagog Historical Society Museum

Emory A. Hebard State Office Building
Open Monday to Friday 9:00 to 5:00
Closed Federal and State Holidays

Main Lobby:

“Celebrating Confluence” - A mural by Robert K. Carsten is a pictorial timeline of the eras, periods, and times of Newport from the Precambrian period to the present.

Handcrafted wooden mobile of autumn beech leaves suspended for two stories.

2nd Floor Lobby & Corridors:

Museum Showcases – Changing exhibits from the society’s collection as well as those from other local historical societies.

“Crossroads Before and Beyond” – An Abenaki Culture timeline of the Native American presence in the Memphremagog Basin designed by Bea Nelson, a member of the Alnobak Wobanakiak.

“History of Newport” – Photographic panels depict the growth and life of the city and towns in the surrounding area. Included are early maps as well as a panel featuring former Governors George H. Prouty and Josiah Grout, both from Newport.

Exterior:

Award winning artwork outdoors includes the Salmon Weather vane on the roof and a Granite Trout near the entrance.